



CHOICE, QUALITY AND VALUE FROM THE WORLD LEADER IN SCIENCE

Aqualine

Reagents for Karl Fischer Analysis



Aqualine

Reagents for Karl Fischer Analysis

Why choose Aqualine?

- Faster and reliable results
- Low toxicity, safer to use
- Odour free
- Extended shelf life
- Affordable price

Fisher Chemical offer a complete range of KF reagents. With unique benefits for each application.

Aqualine™ Volumetric range:

Aqualine
volumetric


- Low toxicity and pyridine free
- Very stable endpoint
- Shelf life of 2 years or more
- Date of packing on the label of the bottle
- Unlimited water capacity for complete reagents
- Available as 1 or 2 component system

Aqualine™ Coulometric range:

Aqualine
coulometric


- Unique and performing formulation
- Fast titrations
- Extraordinary shelf life of 5 years
- Analytes have >1000 mg capacity for water per 100 ml

Aqualine™ Water standard:

- Full range of standards available
- Very stable shelf life of 5 years for ampoules standards
- CoA with ampoule standards
- High purity solid standards

Aqualine



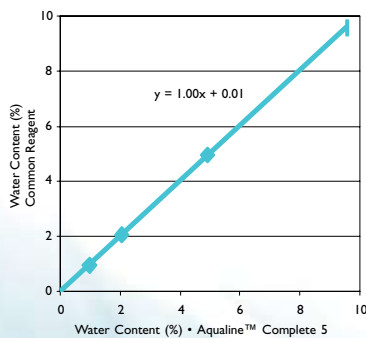
Aqualine™ volumetric performance

Aqualine™ KF volumetric reagents were compared with competitors products using the same automated volumetric moisture meters without altering instrument setup.

When compared to competitors in terms of water recovery and titration, Aqualine™ showed identical results.

Water recovery

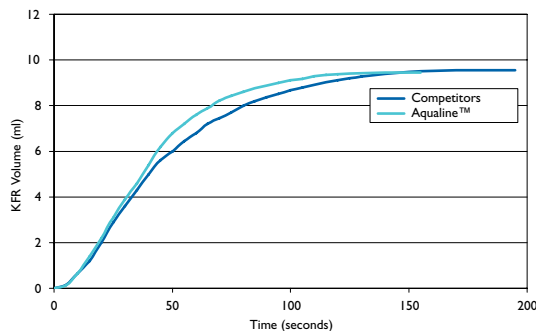
Water content measurements are identical for Aqualine™ and the competitors reagents.



Aqualine™ vs. Competitor Reagents
THF Solvent at various water contents

Titration

Aqualine™ has a rapid titration speed and an identical and a stable endpoint compared to the competitors reagent.



Aqualine™ vs. Competitor Reagents
Course of the titration

Comparative tests on actual samples

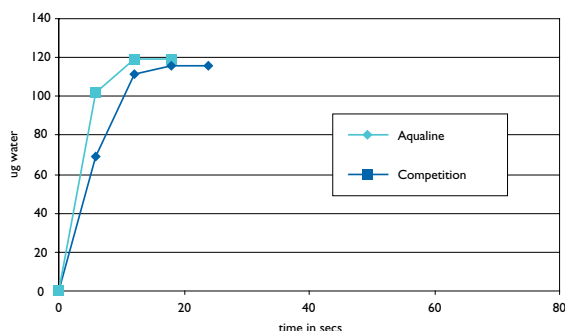
Water content measurements and titration show identical results.

Sample	Working Medium	AQUALINE™		COMPETITOR	
		Titration Time (min)	Water Content (%)	Titration Time (min)	Water Content (%)
Acetic acid (Water added)	Methanol	3:23	1.51	3:59	1.50
		0:12	0.00	0:15	0.01
Triethylamine	Methanol	1:24	1.39	0:55	1.37
		1:24	0.01	0:08	0.01
Dichloroacetic acid	Methanol + imidazole	1:11	1.90	1:04	1.90
		0:13	0.01	0:05	0.01
Vegetable Oil	50% Methanol + 50% Xylene	1:39	0.03	1:43	0.03
		0:28	0.00	0:18	0.00
Shower Gel	Methanol	2:01	81.09	2:34	80.84
		0:02	0.06	0:08	0.04
Acetone	Ketosolver	1:50	1.01	1:53	1.02
		0:13	0.01	0:02	0.01
Hand cream	50% Methanol + 50% Chloroform	1:24	84.80	1:27	84.62
		0:08	0.03	0:06	0.07
Coffee	50% Methanol + 50% Formamide	5:30	5.44	5:04	5.40
		0:01	0.01	0:21	0.19
Chocolate	50% Methanol + 50% Chloroform	4:26	1.75	6:07	1.65
		0:31	0.02	2:12	0.02

Aqualine™ coulometric performance

Aqualine™ KF coulometric reagents were compared with competitors products using the same automated coulometric moisture meters without altering instrument setup.

When compared to competitors in terms of water recovery and titration, Aqualine™ gives a fast titration speed and a stable endpoint.



1 ml of methanol titrated using conventional cell.

Switch to equal or superior performance with Aqualine to reduce your costs.

REAGENTS FOR VOLUMETRIC ANALYSIS: High water content analysis

SINGLE COMPONENT REAGENT

K/1900/15	1L	Aqualine™ Complete 1	Water equivalent 1 mg H ₂ O/ml
K/1950/15	1L	Aqualine™ Complete 2	Water equivalent 2 mg H ₂ O/ml
K/1950/17	2.5L		
K/2000/15	1L	Aqualine™ Complete 5	Water equivalent 5 mg H ₂ O/ml
K/2000/17	2.5L		
K/2350/08	500ml	Aqualine™ Buffer	Buffer for use with acidic samples

REAGENTS FOR ALDEHYDES AND KETONES

K/2250R/15	1L	Aqualine™ Complete 5K	Water equivalent 5 mg H ₂ O/ml
K/2300R/15	1L	Aqualine™ Matrix K	Matrix K should be used in Conjunction with Complete 5K

TWO COMPONENT REAGENT

K/2150/15	1L	Aqualine™ Titrant 2	Water equivalent 2 mg H ₂ O/ml
K/2150/17	2.5L		
K/2200/15	1L	Aqualine™ Titrant 5	Water equivalent 5 mg H ₂ O/ml
K/2200/17	2.5L		
K/2100/15	1L	Aqualine™ Solvent	Water equivalent 8 mg H ₂ O/ml
K/2100/17	2.5L		
K/2110/15	1L	Aqualine™ Solvent CM	Solvent for samples with high hydrocarbon content
K/2110/17	2.5L		

All our Aqualine™ systems are pyridine free.

REAGENTS FOR COULOMETRIC ANALYSIS: Low water content analysis at ppm level

ANOLYTE SOLUTIONS

These contain methanol and chloroform as solvents

K/2500/08	500ml	Aqualine™ Electrolyte A	For general use in conventional cells with a diaphragm.
K/2510/08	500ml	Aqualine™ Electrolyte AD	For use in fritless (diaphragm free) cells

These contain only methanol as solvents

K/2515/08	500ml	Aqualine™ Electrolyte AD-G	For use in fritless (diaphragm free) cells
K/2520/08	500ml	Aqualine™ Electrolyte AG	For general use in conventional cells with diaphragm
K/2530/08	500ml	Aqualine™ Electrolyte AG-H	For samples with high level of hydrocarbon content

CATHOLYTE SOLUTIONS

K/2550/04	25ml	Aqualine™ Electrolyte C	For general use in conventional cells with a diaphragm contains Carbon tetrachloride
K/2560/04	25ml	Aqualine™ Electrolyte CG	For general use in conventional cells with a diaphragm contains methanol as solvent

STANDARDS FOR VOLUMETRIC AND COULOMETRIC APPLICATIONS

K/2740/99	10x4ml	Aqualine™ Standard 0.2	0.2 mg/ml H ₂ O standard
K/2710/99	10x4ml	Aqualine™ Standard 1.0	1 mg/ml or g H ₂ O standard
K/2730/08	500ml	Aqualine™ Standard 5.0	5 mg/ml H ₂ O standard
K/2720/99	10x8ml	Aqualine™ Standard 10.0	10 mg/ml or g H ₂ O standard (1%)
K/2760/45	10g	Aqualine™ Water Standard-KF oven	For use in KF oven technique contains 5.55 ±0.05% water
K/2770/48	100g	Aqualine™ Sodium-tartrate dihydrate Standard	Primary standard for volumetric analysis contains 15.66 ±0.05% water
J/9000/PB08	500ml	Aqualine™ Water solution	1ml = 5.0 mg H ₂ O in Methanol

Interested?

Contact us for a free sample.

Fisher Chemical products are available from:

Thermo Fisher Scientific
Acros Organics
 Geel West Zone 2
 Janssen Pharmaceuticaan 3a
 2240 Geel – Belgium
 Tel: +32 14 57 52 11
 Fax: +32 14 59 26 10
www.acros.com

Aqualine
volumetric



Aqualine
coulometric



Aqualine

